



Any Occasion, Anywhere

www.corelighting.co.uk

LED lighting for all occasions

From making momentous events memorable to illuminating stately homes - core lighting has a product that will meet your led lighting needs!

- ✓ Fully weatherproof battery powered LED lighting
- ✓ Wireless DMX control
- ✓ No power or data cables
- ✓ Innovative design
- ✓ Rugged construction
- ✓ Lightweight, rechargeable lithium ion battery
- ✓ Built for professional, continual usage
- ✓ Quick and easy set up
- ✓ Bright and powerful



Lighting for life's most important moments...



Whether it's a corporate event, a wedding, an anniversary party, or any other of life's important events, you want to make it special and memorable. CORE Lighting has a product for you.

1. ColourPoint Wireless LED Uplighter
2. StripPoint Wireless LED 1m Strip
3. ColourPoint Mini Wireless LED Uplighter
4. PinPoint Wireless Magnetic Pin Spot
5. Flood 30 Wireless LED Floodlight
6. Wireless Outdoor Tree Lights
7. Theatre Worklight
8. EnergyPoint Rechargeable Power Pack
9. Wireless Lighting for Listed Buildings
10. TablePoint Wireless LED Table Lamp

1. ColourPoint Wireless LED Uplighter

Sleek enough for upscale indoor use and IP65 rated for outdoor use under all weather conditions, the ColourPoint™ Wireless LED Uplighter can be used to instantly transform any function, from small parties to large corporate events, weddings, entertainment venues, and even for stage lighting. The combination of battery power and wireless DMX control makes them truly portable, enabling extremely fast setup with no cables, thus creating a safer and more attractive environment. The sleek and shiny exterior finish blends into any decor.

CORE Lighting's battery powered wireless uplighters are known for their style, rugged outdoor IP rating and their 2,000 lumen quad chip RGBW output.



ColourPoint Wireless LED Uplighter



The bright output can light the tops of good sized trees and four/five story buildings, smoothly wash walls, provide temporary lighting to architectural details and beautifully light the insides of tents and rooms.

ColourPoint is available in a six unit charging case to allow for fast and easy transport of the products, along with convenient recharging between uses.



All ColourPoint battery-powered wireless uplighters come equipped with Wireless Solution industry leading wireless DMX built in and can either operate in master/slave mode with one as Receivers. Alternatively, all units can be designated as Receivers and can be broadcast to via a Wireless Solution Transceiver. All units can also operate independently and run their own internal stand alone routines.

ColourPoint Wireless LED Uplighter

How the ColourPoint Wireless LED Uplighter can be used:

- As an individual stand-alone unit.
- To set a solid colour of your choice, or create a rolling fade between colours at the speed of your choice.
- To set one unit as a master and the others as slaves, with the first unit giving instructions to the others.
- To set all units to receive instructions for an external DMX lighting desk, via Wireless Solution wireless DMX.

Accessories

- Feed AC power and external wired DMX via a special power/data cable.
- The standard mirror stainless steel shroud can be replaced with special order shrouds in your choice of colour.
- Lens Mount.
- Diffusion Lenses.
- Hanging Bracket.
- Wired DMX Output Cable



2. StripPoint Wireless LED 1m Strip

The StripPoint Wireless LED Strip is a one meter long lighting fixture with 18 RGBW LED emitters, providing a very bright 4,000 lumen output. The 18 LEDs can be independently controlled by 72 channels for pixel mapping and can produce vivid chases for eye-catching effects.

This linear fixture will make perfectly smooth wall washes and a mixture of ColourPoint uplighters for accent lighting and StripPoint for wall washers will easily fill a room with colour, while using no power or data cables.

The StripPoint is also IP65 rated for outdoor use in all weather conditions. The high tech, long life lithium ion battery will provide eight hours of continuous use in a rolling fade, and recharging is easy in the four way flight case.

For all of its features and power, the StripPoint weighs only 14.3 lbs (6.5kg) and is easy for anyone to carry and set up.



StripPoint Wireless LED 1m Strip



How StripPoint Wireless LED Strip can be used:

- ✓ As an individual stand-alone unit, with one unit acting as a master and the others as slaves.
- ✓ As a unit controlled via Wireless DMX.
- ✓ As a unit set to receive instructions from an external DMX lighting desk. Units may also be connected via 5 Pin XLR in/out connections and
- ✓ run from AC Power.
- ✓ As a unit set with a solid colour of your choice,
- ✓ create a rolling fade between colours at the speed of your choice or create pixel chasing effects from the built-in routines.

Accessories:

- ✓ Four unit charging cases.
- ✓ LED Diffuser lens

3. PinPoint Wireless Magnetic Pin Spot

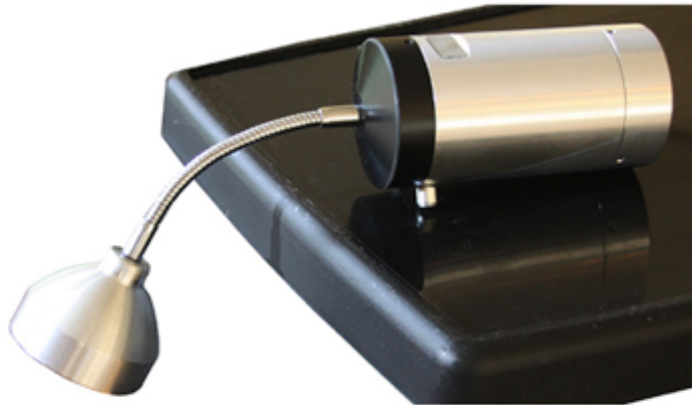
The PinPoint Wireless Magnetic Pin Spot has a very narrow, bright 4.5 degree beam spread that can pinpoint any object, such as a floral centerpiece, painting, or sculpture, by drawing intricate attention to it. The IP65 rating allows the PinPoint to be used both indoors or outdoors – regardless of the weather.

The very bright 300 lumen white beam is easily positioned within the flexible neck of the fixture, and the base of the fixture utilizes a very strong rare earth magnet to enable it to stick to any ferrous metal object. Alternatively, it can be mounted with a clamp.

The warm 3,000° K output will operate for up to 12 hours at full output, and the fixtures are easily recharged in the 10 unit charging flight case.



PinPoint Wireless Magnetic Pin Spot



Control of the PinPoint is easily accomplished via a Bluetooth app from your Android or Apple device, or from a local intensity switch on the body of the fixture.

How the PinPoint™ Wireless Magnetic Pin Spot can be used:

- ✓ As an individual unit with local intensity control.
- ✓ As a remote intensity control via your smartphone.

Accessories:

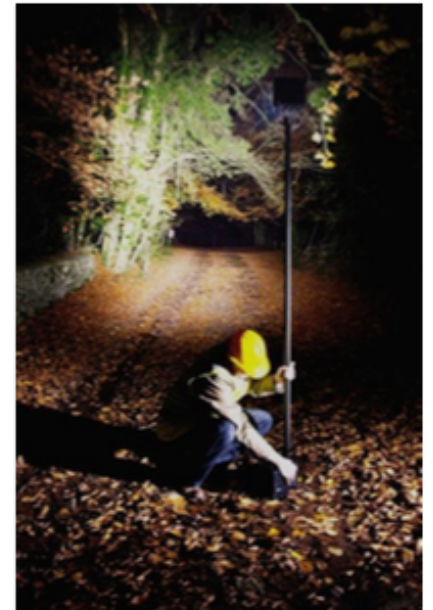
- ✓ Feed AC power via an external power supply/charger.
- ✓ 10 unit charging cases.

4. Flood 30 Wireless LED Floodlight

Sometimes the challenge isn't to make subtle and colourful lighting, but rather to make large swaths of general illumination. If you need to light a long path from the party to the car park without generators or long extension cords, the Flood30™ Wireless LED Floodlight is the answer.

This IP65 fixture can operate in any weather, and its 7,500 lumen output will give the equivalent light output of a 750w halogen lamp.

The lens folds down flat for storage and to protect the LED emitters, and the entire package is only about the size of a 10" (25 cm) cube.



Flood 30 Wireless LED Floodlight



Accessories:

- ✓ Feed AC power via an external power supply.
- ✓ A light stand which can raise the fixture up to 3.5m.
- ✓ Lighting cable extension.
- ✓ Lighting diffusers.

5. ColourPoint Mini Wireless LED Uplighter

The all-new baby brother of the well-established and successful ColourPoint Wireless LED Uplighter. It may be the smaller product but it packs a powerful punch. Sufficient for lighting most areas up to 2-storeys and as usual there are no compromises in design, user-friendliness or quality.

The ColourPoint Mini is sleek enough for the most exclusive environments for indoor use and retains the IP65 rating for outdoor use under all weather conditions. The ColourPoint Mini Wireless LED Uplighter can be used to instantly transform any function, from small parties to large corporate events, weddings, entertainment venues, and even for stage lighting with a built-in mounting point to attach to tripod or truss.



ColourPoint Mini Wireless LED Uplighter



The combination of battery power and wireless DMX control makes them truly portable, enabling extremely fast setup with no cables, thus creating a safer and more attractive environment. The unit's aluminium casing blends into any décor and can be enhanced with additional optional shrouds in any colour including stainless steel mirrored finish.

CORE Lighting's battery powered wireless uplighters are known for their style, rugged outdoor IP rating and their brightness. In this case a 1,200 lumen dual chip RGBW output.

Where the full ColourPoint unit is capable of lighting up to 4 storeys, the ColourPoint Mini is aimed towards smaller 2 storey venues, as with the majority of hotel function suites, marquees tents, party venues and small trees.

The unit can smoothly wash walls, provide temporary lighting to architectural details and beautifully light the insides of marquee tents and rooms.

ColourPoint Mini Wireless LED Uplighter

ColourPoint Mini is available in a lightweight six unit charging case to allow for fast and easy transport of the products, along with convenient recharging between uses.

All ColourPoint Mini battery-powered wireless uplighters come equipped with Wireless Solution industry leading Wireless DMX built in and can either operate wirelessly from a Wireless DMX transmitter unit, or from a ColourPoint unit set to 'Master' or in stand-alone mode,. All units in stand-alone mode can operate independently with built-in set colours matched to Lee filters or alternatively run their own internal routines.

Low cost lightweight lithium battery powered Mk2 LED event uplight with Wireless DMX Control, rated for outdoor use (IP65). Very bright 1200 lumen output will light up small trees, 2 storey architectural uplighting and wall-washing in marquees & buildings.



How ColourPoint Mini Wireless LED Uplighter can be used:

- ✓ As an individual stand-alone unit.
- ✓ To set a solid colour of your choice, or create a rolling fade between colours at the speed of your choice.
- ✓ Receiving commands as a 'slave' from a ColourPoint unit set as a 'master', with the 'master' unit giving instructions to the others.
- ✓ To set all units to receive instructions from an external DMX lighting desk, via Wireless Solution wireless DMX
- ✓ New RGBW LED technology for excellent colour-mixing.
- ✓ Charge from mains supply in a 6-way flight case.
- ✓ Mounted on truss as a PARCan light to create downlighting.

Accessories

- ✓ Order customised shrouds in your choice of colour
- ✓ Lens Mount & Diffusion Lenses
- ✓ Hanging bracket to hang ColourPoint from truss, marquee tent frames etc.

Available as ColourPoint Mini Set:

- ✓ This set includes: 6 x ColourPoint Mini uplighters and a 6-way low voltage charging flightcase.



6. Wireless Outdoor Tree Lights

For the festive season CORE Lighting commissioned to develop a product using a combination of battery technology with fairy lights to illuminate church yard trees during the festive season.

These were installed throughout the festive season with recharging points inside a church using removable battery packs for charging during the daytime.

Temperatures of -20 degree celsius were regularly seen through that period. The system has been used for 6 years now.



7. Theatre Worklight



The CORE Theatre Worklight is a mains dimmable white work light or blues light for theatre task lighting that can be dimmed simply from existing undimmed mains circuits using an existing power switch. White or blue modes can be selected during a performance. The fixtures may be attached to truss, ceilings or walls and may directly replace existing lighting.

Costs are significantly reduced with LED technology improving light quality and providing energy savings using 1/7 to 1/10th of the power of halogen fixtures. Dimmed mode conserves more energy. With over 50,000 hours' life expectancy, bulb replacement and maintenance are virtually eliminated too making it ideal for retrofit situations to save energy and money.

8. EnergyPoint Rechargeable Power Pack

If you are looking to light up a buffet table with no cables, or illuminate an exhibition stand but have no power or no desire to purchase power.

This unit is a large power source capable of running individual LED lamp products for several days, or up to 4 LED lamps for a day.

Running using a 12V compatible system but powered by a high-technology, high-density lithium pack, the unit provides power to most devices and lamps up to around 50W per product where the products themselves are rated at 12VDC.

The system is provided in a dual flight case with two sleek battery pack units which blend into the décor due to their stainless steel shrouds.

The mechanics are in fact designed to have the same appearance as the ColourPoint uplighter unit. The case doubles as a charging solution whereby the power packs can be recharged inside the case ready for the next deployment/overnight for a full charge.

Neither the lamp nor the LED driver are provided with the product. The user can source these separately.



9. Wireless Lighting for Listed Buildings



We have developed battery powered courtyard floodlights for listed buildings or buildings restricted by planning – comprising a head system that can be attached to listed buildings whilst the battery unit is brought out for use each day.



10. TablePoint Wireless LED Table Lamp

Premium lamp solution for events firms, hotels, venues, restaurants, bars & marquee tent firms to illuminate dining tables, occasional tables, and even standard lamps and lanterns.

The TablePoint is wireless controlled and sufficiently bright for most purposes, lasting 8-10 hours on a full charge.

Please contact us if you are interested in hiring this product.

The TablePoint will only be available to hire for the foreseeable future and is a new innovation for CORE Lighting and for the market in general.





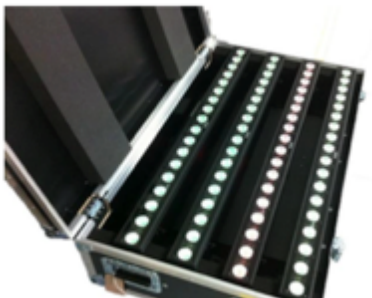
ColourPoint Set

This set includes: 6 x ColourPoint2 RGBW uplighters, 6 x silver case shrouds and a 6-way low voltage charging flightcase.



PinPoint Set

The set includes: 10 X LED PinPoints and a 10-way charging flight case.



StripPoint Set

The set includes: 4 X Strip-Points and a 4-way charging flight case.

About CORE Lighting



ANY VENUE, ANY OCCASION

Bright, colourful and robust, CORE Lighting products are innovative in design and rugged in construction.

Fully weatherproof and battery powered, our comprehensive range of wireless LED lighting products are quick and easy to set up and do not require power or data cables.

Featuring lightweight but powerful rechargeable lithium ion battery technology, they are suitable for professional, continual usage.

GET IN TOUCH

CORE Lighting Limited,
Prindion House,
Kingsmill Lane,
Painswick, Glos,
GL6 6SA

UK freephone: 0845 269 2673
International: +44 1452 813 405

Email: sales@corelighting.co.uk
Website: www.corelighting.co.uk